

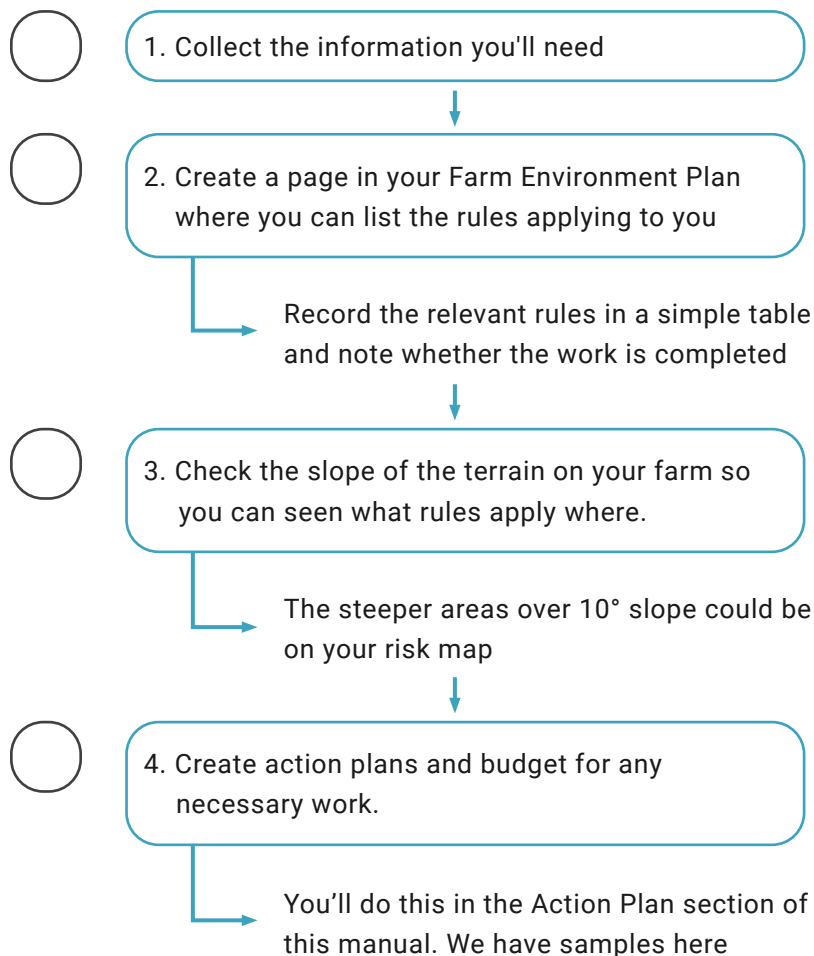
# TOOLBOX: RULES



## 01 What information will I need?

- Regional council and national rules affecting stock access to water, greenhouse gas emissions and biodiversity
- Slope map of your farm
- Slope measuring app for your smartphone, or simply use the [Low Slope Map](#)
- [Deer Industry Environment Management Code of Practice: p66-73 on Regulations](#), with links to regional councils provided
- [Intensive winter grazing regulations](#)

Tick these off as you go





## 02 Identify risk locations/activities

Record national and regional regulations in simple tables like these. The first lines are examples. Add the rules that apply to you in the spaces provided underneath and click in the column at right to show whether the work is done or not done yet.

National regulations	My farm	
	Done	Not done yet
<i>Fence 3m back from a waterway over 1m wide on low slope land or 5m for crops/irrigation</i>	✓	

Regional regulations	My farm	
	Done	Not done yet
<i>Fence winter crop paddock back 5m from a waterway in Southland</i>		✓



### DID YOU KNOW?

**Local rules**  
.....

Often there is a schedule in the regional plan that sets out exactly what your environment plan needs to cover. If your council requires you to have your farm plan audited you will already have a list of the rules you need to meet. Include these in your Farm Environment Plan.

**Established national rules**  
.....

Check the National Essential Freshwater rules to make sure you are meeting those. See: [www.mfe.govt.nz/fresh-water/freshwater-guidance/factsheets-policies-and-regulations-essential-freshwater](http://www.mfe.govt.nz/fresh-water/freshwater-guidance/factsheets-policies-and-regulations-essential-freshwater)

## ? National rules under development

Some national rules were still under development when this manual was published. Check the links below to find out the latest.

### Reducing greenhouse gas emissions.

He Waka Eke Noa, the Primary Sector Climate Action Partnership set important milestones:

- **31 December 2021:** 25% of farms know their annual on-farm methane and nitrous oxide (GHG) emissions, and have a written plan in place to measure and manage their emissions.
- **31 December 2022:** All farms know their annual on-farm GHG emissions
- **31 December 2025:** All farms include the mitigation of greenhouse gas emissions and adaptation to climate change in their farm business and environment plans. For farm planning guidance see: [hewakaekenoa.nz/wp-content/uploads/2021/03/GHG-Farm-Planning-Guidance-March.pdf](https://www.hewakaekenoa.nz/wp-content/uploads/2021/03/GHG-Farm-Planning-Guidance-March.pdf)

### National Policy Statement for Indigenous Biodiversity

For the latest, see: [environment.govt.nz/acts-and-regulations/national-policy-statements/proposed-nps-indigenous-biodiversity](https://www.environment.govt.nz/acts-and-regulations/national-policy-statements/proposed-nps-indigenous-biodiversity)

### Intensive winter grazing

[environment.govt.nz/acts-and-regulations/freshwater-implementation-guidance/intensive-winter-grazing](https://www.environment.govt.nz/acts-and-regulations/freshwater-implementation-guidance/intensive-winter-grazing)

## ? Slope rules in rolling-to-steep paddocks

Steeper paddocks are often stocked at a lower rate than flatter paddocks. Fencing streams in these paddocks and reticulation of stock water to them can be impractical. The new rules allow you to graze these paddocks with deer and cattle without fencing the waterways if the land is not “low slope”.

Under proposed revisions for the Stock Exclusion Regulations:

- all beef cattle and deer must from 1 July 2025 be excluded from all waterways on land with an average slope of 5 degrees or less, and
- must have addressed the need for stock exclusion through a certified freshwater farm plan in areas with an average slope of between 5 and 10 degrees.

The regulations will not apply to farmland that’s **more than 500 metres above sea level**, or areas in tall tussock or depleted grassland.

In areas not captured by the [low-slope maps](#), farmers will still be required to have freshwater farm plans to demonstrate that they are protecting water quality.

By 2023, farmers will be expected to integrate these plans into broader integrated farm plans that will go beyond freshwater.

*Slope rules in rolling-to-steep paddocks cont.*

Some regional councils have used a slope/stocking rate rule. For example in Tukituki, if most of the paddock is over 15o slope, you can avoid waterway fencing if the stocking rate is below 18 stock units/ha. However, you'd still need to exclude cattle if the area is considered Low Slope on the national map and the waterway is over 1m wide.

? When rules come into effect .....

New rules covering winter grazing came into effect from May 2022.

All lakes and waterways 1m or wider on low-slope land need to exclude deer and cattle from 1 July 2025.



All cattle, pigs and deer must be excluded from natural wetlands with an area more than 500 square metres from 1 July 2025.





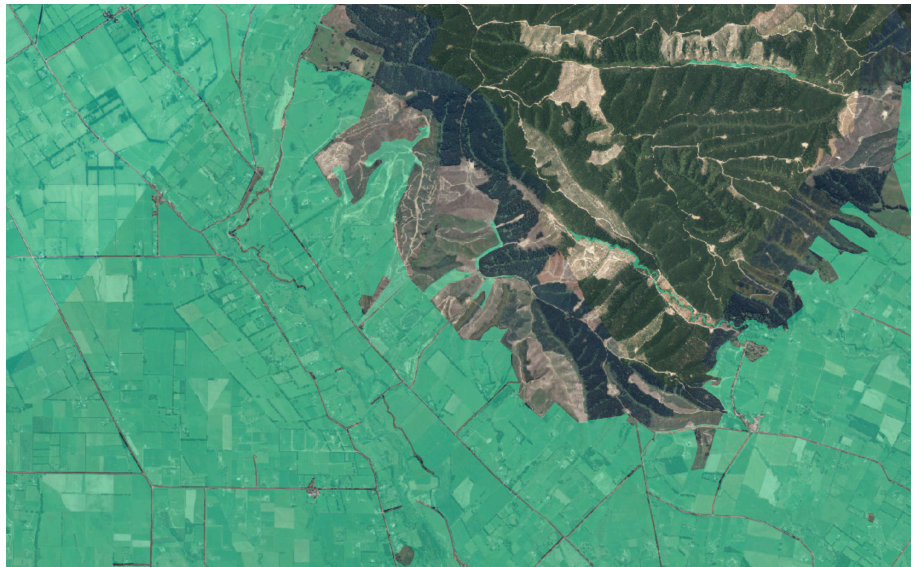
## 03 Checking the lie of the land



### HANDY HINTS

How do I  
know what's  
"low slope"?  
.....

1. Check your farm using the online tool at: [www.arcgis.com/apps/view/index.html?appid=4431febca3854ee19bb4c67bc94029bb](http://www.arcgis.com/apps/view/index.html?appid=4431febca3854ee19bb4c67bc94029bb)



2. Ask your regional council or farm planner for a digital elevation map; or
3. For a quick guide when out on the farm use an inclinometer app on your smartphone.  
For Android and iPhone: [techigem.com/inclinometer-apps](http://techigem.com/inclinometer-apps)  
Alternatively for iPhone: Use the "Measure" app and select the "Level" function.

Map it!  
.....

Indicate on your farm map, or make a list of the paddocks that have waterways and are considered low slope within the Resource Management (Stock Exclusion) Regulations 2020.

Any waterways over 1m wide on this map need to be fenced or stock excluded.

- Which paddocks with waterways on this map are <10o slope and don't have reticulated water?
- Note how and when troughs can be installed so stock can be excluded from the waterways.



## 04 Sample action plans for waterways

Refer to these examples when you're completing the Waterways Action Plan section.

### Low-slope paddock < 10°

Objective	Risk identified	Risk level	Action	Measure and monitor	Date initiated	Who
Comply with rules for stock exclusion from waterways where slope is mapped < 10°	Stream bank erosion and sediment getting into waterways		Connect waterline from the Double Tanks paddock to Back Flats and install a trough	Reticulated stock water available in the Back Flats paddock	1 July 2023	Me, staff, catchment group, AP or DIEG, land management officer, farm adviser

### Paddocks with waterways > 10° slope

Here are examples of action plans that could help, depending on your regional council rules:

Objective	Risk identified	Risk level	Action	Measure and monitor	Date initiated	Who
Comply with rules for stock exclusion from waterways where slope is > 10°	Stream bank erosion and sediment getting into waterways		In paddocks over 10° slope exclude cattle and deer from streams > 1m wide bank to bank, wetlands, and lakes	Visual inspection – low stocking rates in steep paddocks	1 July 2025	Me, staff, catchment group, AP or DIEG, land management officer, farm adviser
Compliance with local slope/stocking rate waterway exclusion rules	Stream bank erosion and sediment getting into waterways		In paddocks > 15° slope, maintain deer	Visual inspection – low stocking rates in steep paddocks	31 May 2022	Me, staff, catchment group, AP or DIEG, land management officer, farm adviser



## 04 Sample action plans for waterways cont.

Paddocks >10° slope with waterways and no reticulated water

Sample action plan in case rules for stock exclusion on steeper land change. Note how and when troughs can be installed.

Objective	Risk identified	Risk level	Action	Measure and monitor	Date initiated	Who
Stock exclusion from waterways	Stream bank erosion and sediment getting into waterways		Connect waterline from the Double Tanks paddock to Back Flats and install a trough	Reticulated stock water available in the Back Flats paddock	1 July 2025	Me, staff, catchment group, AP or DIEG, land management officer, farm adviser

### FOR FURTHER INFORMATION

- [Deer Industry Environmental Management Code of Practice: p66-69](#) for general information about regulations
- **Deer Fact:** [Farm Environment Plans](#)
- **DairyNZ:** [Summary of freshwater regulations](#)
- [Intensive winter grazing module](#)