



XCELL RISING STARS

NATIONAL HARD ANTLER AND VELVET COMPETITION

Setting new benchmarks for the future of New Zealand Deer

2019



Thank you to all the entrants, producers, breeders, sponsors, volunteers, judges and to everyone who contributed to making this evening such a successful event!

Saturday 16 March 2019
Black Forest Park, Otago

The 2019 XCELL Rising Stars is supported by the New Zealand Deer Farmers' Association and hosted in conjunction with the Otago Branch of NZDFA and Black Forest Park

Class 1 – National 1 Year Old Red Hard Antler

Sponsored by Rockvale Deer Stud



Only 1 beam circumference taken. All antlers measured using the DFM Competition Inches scoring system – this measures inches of antler only and does not include burr or span measurements



- 1st Dianne Bringans
- Orr NZ Ltd/Tower Farms
- 2nd Graham Kinsman
on behalf of Orr NZ/Tower Farms
- 3rd Murray Coutts
on behalf of Peel Forest Estate

Presented by
Rex Cowley – Rockvale Deer Stud

Class 1 - 1 Year Old Hard Antler - Sponsored by Rockvale Deer Stud								Total entries in this class	28	
Name	Entry	Breeder	Stag Name	Age	Sire	Dam Sire	Score	Points	Main	Beam
Orr NZ LTD/Tower Farms	908-2	Orr NZ Ltd/Tower Farms	181	1	Figjam	Tower Farms	568 3/8	34 x 31	22	22
Orr NZ LTD/Tower Farms	908-3	Orr NZ Ltd/Tower Farms	157	1	Figjam	Tower Farms	515 4/8	35 x 33	22	23
Peel Forest Estate	925-5	Peel Forest Estate	171879	1	Rigby	Lincoln	477 2/8	28 x 30	22	24
C & D Petersen	906-6	C & D Petersen	Purple 21	1	Kallis	Sovereign II	471 2/8	28 x 27	24	26
Peel Forest Estate	925-4	Peel Forest Estate	171836	1	Rigby	Lincoln	455	32 x 30	20	22
Peel Forest Estate	925-1	Peel Forest Estate	171710	1	Rigby	Nixon	439 5/8	29 x 28	19	20
Orr NZ LTD/Tower Farms	908-1	Orr NZ Ltd/Tower Farms	177	1	Figjam	Tower Farms	435 6/8	25 x 23	23	22
Whyte farming	919-4	Whyte farming	Little Joe	1	WR67	.	416 1/8	23 x 25	28	29
Foveran Deer Park	926-8	Foveran Deer Park	7346	1	Apex	Davidson	369 7/8	16 x 21	31	31
Peel Forest Estate	925-3	Peel Forest Estate	171886	1	Rigby	Lincoln	368 1/8	22 x 25	20	22
Foveran Deer Park	926-2	Foveran Deer Park	7200	1	Fitzroy	Houghton	360 2/8	16 x 18	26	25
Coast Farms	911-1	Coast Farms	Green 90	1	Turbo	Cascade	359 4/8	31 x 32	20	21
Foveran Deer Park	926-1	Foveran Deer Park	7338	1	Rigby	McCaw	359 1/8	18 x 22	22	19
Peel Forest Estate	925-2	Peel Forest Estate	171745	1	Rigby	Davidson	358	20 x 20	28	29
Foveran Deer Park	926-3	Foveran Deer Park	7114	1	Orlando	Prince Phillip	357 5/8	18 x 30	20	21
Peter Adlam	907-1	Peter Adlam	Yellow205	1	Zinny	Metallica	348 4/8	20 x 23	22	22
Foveran Deer Park	926-10	Foveran Deer Park	7032	1	Munro	Amadeus	343 3/8	21 x 17	23	22
Foveran Deer Park	926-6	Foveran Deer Park	7320	1	Apex	Davidson	341 7/8	16 x 18	26	28
Foveran Deer Park	926-4	Foveran Deer Park	7158	1	Apex	Davidson	333 1/8	19 x 17	26	23
Peter Adlam	907-3	Peter Adlam	Yellow 51	1	Zinny	Pampas	330 2/8	17 x 14	25	29
Foveran Deer Park	926-7	Foveran Deer Park	7378	1	Rigby	Davidson	328 1/8	20 x 20	24	25
Foveran Deer Park	926-9	Foveran Deer Park	7080	1	Fitzroy	Houghton	327 4/8	25 x 19	24	24
Rockvale Deer Stud	903-3	Rockvale Deer Stud	Y763	1	Lincoln	Leon	324 1/8	18 x 17	23	25
Foveran Deer Park	926-5	Foveran Deer Park	7356	1	Rigby	Gregor	324 1/8	27 x 31	16	16
N Cunningham	921-2	Mt Cook Trophy	Riley	1	Leon's Son	.	310 3/8	22 x 18	20	19
Peter Dolton	923	.	Waywood Oak	1	.	.	284	17 x 18	22	22
Coast Farms	911-2	Coast Farms	Green 530	1	Orlando	Prince Philip	280 2/8	16 x 19	19	20
Pinewood Deer	902-3	Pinewood Deer	Green 736	1	Dino	Y554	260 2/8	13 x 11	23	25



568 3/8



515 4/8



477 2/8

1st
Orr NZ LTD/Tower Farms

2nd
Orr NZ LTD/Tower Farms

3rd
Peel Forest Estate

Class 2 – National 2 Year Old Red Hard Antler

Sponsored by Lynne Rhodes A.I Services Limited



All antlers measured using the DFM Competition Inches scoring system – this measures inches of antler only and does not include burr or span measurements



- 1st Neville Cunningham
– Mt Cook Trophy Hunting
- 2nd Murray Coutts
on behalf of Peel Forest Estate
- 3rd Barry Gard
– Foveran Deer Park

Presented by
Lynne Rhodes - Lynne Rhodes AI Services Limited

Class 2 - 2 Year Old Hard Antler- Sponsored by Lynne Rhodes AI Services Ltd							Total entries in this class	11			
Name	Entry	Breeder	Stag Name	Age	Sire	Dam Sire	Score	Points	Main	Beam	
N Cunningham	921-1	Mt Cook Trophy	Jonty	2	Leon's son	.	472 6/8	32 x 36	25	24	1st
Peel Forest Estate	925-9	Peel Forest Estate	151593	2	Davidson	.	469 6/8	26 x 29	31	27	2nd
Foveran Deer Park	926-12	Foveran Deer Park	6075	2	Alexander	McCaw	421 2/8	24 x 22	27	30	3rd
Coast Farms	911-3	Coast Farms	Red 256	2	Action	Robby Boy	420 4/8	25 x 30	22	27	
Rockvale Deer Stud	903-1	Rockvale Deer Stud	Y699	2	Hansen	Y540	408 6/8	17 x 20	33	31	
Foveran Deer Park	926-11	Foveran Deer Park	6056	2	Alexander	Apollo	407	26 x 28	23	24	
D Butterick	924	D Butterick	621	2	331	385	399 2/8	17 x 19	32	34	
C & D Petersen	906-1	C & D Petersen	Blue 311	2	Alexander	Metallica	373 6/8	21 x 24	32	31	
Raincliff Station	927-1	Raincliff Station	16-96	2	Amadeus	Adonis	364	14 x 23	26	27	
Foveran Deer Park	926-13	Foveran Deer Park	6114	2	Alexander	Windsor	361 6/8	18 x 21	28	26	
Deer Genetics NZ	905-2	Deer Genetics NZ	6014/16	2	Phantasos DG	Huneric DG	361 4/8	20 x 21	22	22	



1st
Neville Cunningham



2nd
Peel Forest Estate



3rd
Foveran Deer Park

Class 3 – National 3 Year Old Red Hard Antler

Sponsored by Tower Farms



All antlers measured using the DFM Competition Inches scoring system – this measures inches of antler only and does not include burr or span measurements



1st Jerusha Bennett
on behalf of Stag Genetics

2nd Ben Beadle
on behalf of Crowley Deer

3rd Richard Currie
– Black Forest Park

Presented by
Graham Kinsman on behalf of Tower Farms

Class 3 - 3 Year Old Hard Antler - Sponsored by Tower Farms							Total entries in this class	7			
Name	Entry	Breeder	Stag Name	Age	Sire	Dam Sire	Score	Points	Main Beam		
Stag Genetics	904-2	Deer Genetics NZ	Zzivar DG	3	Phantasos DG	Phobetor DG	623 4/8	28 X 29	33	33	1st
Crowley Deer	909	Crowley Deer	Texas	3	Origin	Warlord	605 6/8	34 X 30	35	34	2nd
Black Forest Park	910-1	Black Forest Park	Alonso	3	Harrison	Columbia	576	21 X 26	30	31	3rd
Whyte Farming	919-3	Whyte Farming	Y699	3	D'Archiac	.	524 6/8	19 X 18	36	36	
C & D Petersen	906-2	C & D Petersen	Shane	3	Kallis II	Sovereign II	513	25 X 26	31	31	
C & D Petersen	906-4	C & D Petersen	Red 118	3	Sam	Kallis	505 4/8	27 X 25	27	30	
Hudson/Foveran Deer	922	Crowley Deer	Stratford	3	Nixon	Caviar	480 6/8	24 X 18	34	36	



1st
Stag Genetics



2nd
Crowley Deer



3rd
Black Forest Park

Class 4 – National 4 Year Old Red Hard Antler

Sponsored by Crowley Deer



All antlers measured using the DFM Competition Inches scoring system – this measures inches of antler only and does not include burr or span measurements



1st Rex Cowley
– Rockvale Deer Stud

2nd Barry Gard
– Foveran Deer Park

3rd Jerusha Bennett
– Deer Genetics NZ

Presented by
Graham Kinsman on behalf of Crowley Deer

Class 4 - 4 Year Old Hard Antler - Sponsored by Crowley Deer							Total entries in this class	13			
Name	Entry	Breeder	Stag Name	Age	Sire	Dam Sire	Score	Points	Main Beam		
Rockvale Deer Stud	903-2	Rockvale Deer Stud	Lennox	4	Leon	Madison	742 4/8	31 x 32	31	31	1st
Foveran Deer Park	926-15	Foveran Deer Park	Cane	4	McCaw	Huneric	704 7/8	26 x 28	43	40	2nd
Deer Genetics NZ	905-1	Deer Genetics NZ	Zafarai DG	4	Phantasos DG	Huneric DG	686 3/8	26 x 27	40	41	3rd
Peter Adlam	907-2	Peel Forest Estate	Yellow 523	4	Davidson	Milo	620 6/8	22 x 26	42	43	
C & D Petersen	906-3	C & D Petersen	Sharc	4	Kallis	Mocco	612 7/8	30 x 26	33	38	
Peel Forest Estate	925-7	Peel Forest Estate	Barkley	4	Davidson	Hannibal	605 6/8	28 x 34	34	35	
Black Forest Park	910-2	Crowley Deer	14403	4	Leon	Brusnik	592	27 x 24	34	39	
Peel Forest Estate	925-6	Peel Forest Estate	14554	4	Chancellor	Davidson	569 3/8	24 x 29	38	40	
Stag Genetics	904-1	Deer Genetics NZ	Cleomenes DG	4	Hilderic DG	Morpheus DG	568 7/8	23 x 21	40	42	
Peel Forest Estate	925-10	Peel Forest Estate	Archer	4	Bowman	Sir Ed	548 6/8	23 x 23	35	40	
Foveran Deer Park	926-14	Foveran Deer Park	Walter	4	Davidson	Morpheus	533 4/8	28 x 26	33	32	
Peel Forest Estate	925-8	Peel Forest Estate	Buster	4	403	General	532	22 x 17	37	36	
Coast Farms	911-4	Coast Farms	Blue 485	4	Bugles	Crayfish	531 3/8	22 x 23	31	33	



1st
Rockvale Deer Stud



2nd
Foveran Deer Park



3rd
Deer Genetics NZ

Class 5 - National 2 Year Elk/Wapiti Hard Antler

Sponsored by CK Import/Export



All antlers measured using the DFM Competition Inches scoring system – this measures inches of antler only and does not include burr or span measurements

Class 5 - 2 Year Old Elk/Wapiti Hard Antler - Sponsored by CK Import/Export							Total entries in this class	3			
Name	Entry	Breeder	Stag Name	Age	Sire	Dam Sire	Score	Points	Main Beam		
TYPICAL											
Whyte Farming	919-2	Whyte Farming	YR952	2	Seattle	.	305 6/8	6 x 6	40	42	1st
NON TYPICAL											
Raincliff Station	927-2	Raincliff Station	16-129	2	Tartan	Raincliff	326 2/8	7 x 11	36	37	1st
Whyte Farming	919-1	Whyte Farming	YR978	2	Y129	.	319	8 x 8	43	38	2nd



TYPICAL

1st Brad Travers on behalf of Whyte Farming

Presented by Jerusha Bennett on behalf of CK Import/Export

NON - TYPICAL

1st David Morgan - Raincliff Station

2nd Brad Travers on behalf of Whyte Farming

Presented by Jerusha Bennett on behalf of CK Import/Export



1st Typical
Whyte Farming



1st Non – Typical
Raincliff Station



2nd Non – Typical
Whyte Farming





Thank you to our Judges

Hub Hall (Head Judge), Geraldine Fitzgerald, Brad Travers, Murray Coutts, Tony Pearce and Adam Whaanga

Thank you to Bill Robinson, Ian Bristow and the team from PGG Wrightson, Graham Kinsman, John Williams, Ben Beadle and Kelly van Raalte for all of your help

Thank you to the organising committee Michelle Cowley, Graham Kinsman, Richard Currie and Tony Pearce

Thank you to the Black Forest Park team for hosting

Photos courtesy of Kerry Hodge Photography

Class 6 – National 3 Year Old Fallow Hard Antler

Sponsored by New Zealand Fallow Deer Society



Class 6 - 3 Year Old Fallow Hard Antler- Sponsored by NZ Fallow Deer Society							Total entries in this class		8	
Name	Entry	Breeder	Stag Name	Age	Sire	Dam Sire	Score	Points	Main Beam	
Pinewood Deer	902-2	Pinewood Deer	purple 95	3	.	.	217 3/8	14 x 13	23	24
Pinewood Deer	902-1	Pinewood Deer	Purple 172	3	Green 144	SI mob	214 6/8	15 x 15	26	27
Whyte Farming	919-6	Whyte Farming	Watch This	3	.	.	201 5/8	13 x 13	27	28
Cook Deer	900	.	White 40	3	.	.	196 5/8	12 x 13	23	24
Top Deck Trading	901	Top Deck Trading	Yellow 120	3	Blue 28	.	195 3/8	13 x 12	24	23
Whyte farming	919-5	Whyte farming	Spot The	3	.	.	193 2/8	12 x 10	26	26
Pinewood Deer	902	Pinewood Deer	Purple 261	3	Y20	.	192 2/8	13 x 14	27	26
S Millichamp	920	S Millichamp	Boris	3	White Buck	.	172 3/8	12 x 11	24	24



1st
Pinewood Deer Farm



2nd
Pinewood Deer Farm



3rd
Whyte Farming

1st Ian Bristow – Pinewood Deer | 2nd Ian Bristow – Pinewood Deer | 3rd Brad Travers on behalf of Whyte Farming
Presented by Greg McKay on behalf of the NZ Fallow Deer Society

Class 7 – National Red Deer Sire of 3

Sponsored by LJ AI Services



Class 7 - Sire Of Three - Sponsored by LJ AI Services				Total entries in this class	5
Name	Entry	Breeder	Stag Name		
Deer Genetics NZ	905	Deer Genetics NZ	Phantasos DG	1st	
Orr NZ LTD/Tower Farms	908	Tower Farms	Figjam	2nd	
Foveran Deer Park	926 C	Foveran Deer Park	Apex	3rd	
Foveran Deer Park	926 A	Foveran Deer Park	Alexander		
Foveran Deer Park	926 B	Foveran Deer Park	Rigby		



1st
Deer Genetics NZ



2nd
Orr NZ LTD/Tower Farms



3rd
Foveran Deer Park

1st Jerusha Bennett - Deer Genetics NZ | 2nd Dianne Bringans - Orr NZ Ltd/Tower Farms
3rd Barry Gard - Foveran Deer Park
Presented by Kylie McKay on behalf of LJ AI Services

Class 8 – National 2 Year Old Red Velvet

Sponsored by Foveran Deer Park



- 1st Clive Paterson
- B & J Paterson
- 2nd Bruce Paterson
- B & J Paterson
- 3rd John Somerville
- Arawata Deer Farm

Presented by
Barry Gard – Foveran Deer Park

Class 8 - 2 Year Old Red Velvet - Sponsored by Foveran Deer Park							Total entries in this class 4		
Name	Entry	Breeder	Stag Name	Age	Sire	Dam Sire	Score	Weight	
B & J Paterson	914-2	Dalmore Deer	Woodlaw	2	294	Fergus	33.63	7.14	1st
B & J Paterson	914-1	Dalmore Deer	Wal	2	796	771	37.43	6.55	2nd
Arawata Deer Farm	913	Arawata Deer Farm	Split Ends	2	Manhattan	Zama	51.53	5.52	3rd
D & J MacGibbon	917	D & J MacGibbon	Single Malt	2	Jura	.	73.58	5.18	



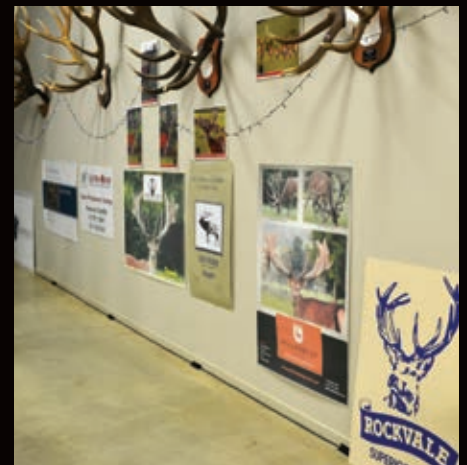
1st
B & J Paterson



2nd
B & J Paterson



3rd
Arawata Deer Farm



Class 9 National Red Deer Super Heavy Weight 10kgs+ Velvet Sponsored by Tradedeer.co.nz



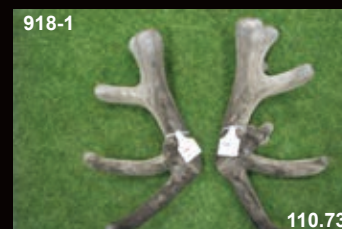
Class 9 - Super Heavy Weight 10 kgs + Velvet - Sponsored by Tradedeer.co.nz								Total entries in this class	3
Name	Entry	Breeder	Stag Name	Age	Sire	Dam Sire	Score	Weight	
Hudson/Tayles	918-2	Netherdale	Totara	8	Wardlaw	333/05	39	16.54	1st
Tower Farms	916	Tower Farms	JD	10	Ideal Neil	Watson	79.30	12.80	2nd
Hudson/Tayles	918-1	Netherdale	Harley	3	Harlem	Riley	110.73	10.16	3rd



1st
Hudson/Tayles



2nd
Tower Farms



3rd
Hudson/Tayles

1st Murray Coutts on behalf of Hudson/Tayles
 2nd Graham Kinsman on behalf of Tower Farms
 3rd John Williams on behalf of Hudson/Tayles
 Presented by Ian Bristow on behalf of tradedeer.co.nz

Class 10 National 2 Year Old Elk/Wapiti Velvet Sponsored by Elk and Wapiti Society of New Zealand



Class 10 - 2 Year Old Elk/Wapiti Velvet - Sponsored by Elk and Wapiti Society of New Zealand								Total entries in this class	3
Name	Entry	Breeder	Stag Name	Age	Sire	Dam Sire	Score	Weight	
D & D Lawrence	915-2	Tikana	Devon	2	Devereux	Storm	33.00	9.71	1st
D & D Lawrence	915-3	Tikana	Hendrix	2	Thor	Trilogy	54.73	8.18	2nd
D & D Lawrence	915-1	Tikana	Juggernaut	2	Isobar	Nepia	72.28	8.44	3rd



1st
D & D Lawrence



2nd
D & D Lawrence



3rd
D & D Lawrence

1st Murray Coutts on behalf of D & D Lawrence
 2nd Graham Kinsman on behalf of D & D Lawrence
 3rd Ben Beadle on behalf of D & D Lawrence
 Presented by Brad Travers - Elk and Wapiti Society New Zealand

People's Choice – Hard Antler

Sponsored by Crystalyx NZ



Stag Genetics | 904-1



Jerusha Bennett
– on behalf of Stag Genetics

Presented by
Janey Hayes - Crystalyx NZ

People's Choice – Velvet

Sponsored by Ultra Scan, Raewyn Cunliffe



Tower Farms | 916



Graham Kinsman
on behalf of Tower Farms

Presented by
Kylie McKay on behalf of
Raewyn Cunliffe of Ultra Scan

Supreme Trophy Award

Sponsored by Peel Forest Estate



903-2 | Rockvale Deer Stud | Class 4 Winner
Rex and Suzanne Cowley - Rockvale Deer Stud
Presented by Head Judge Hub Hall on behalf of Peel Forest Estate



THANK YOU TO OUR SPONSORS

MAJOR SPONSOR



GOLD SPONSOR



SILVER SPONSOR



BRONZE SPONSOR



TABLE SPONSORS



PRODUCT SPONSORS

