

# NZ NATIONAL VELVET & TROPHY ANTLER COMPETITION 2017



Conducted by



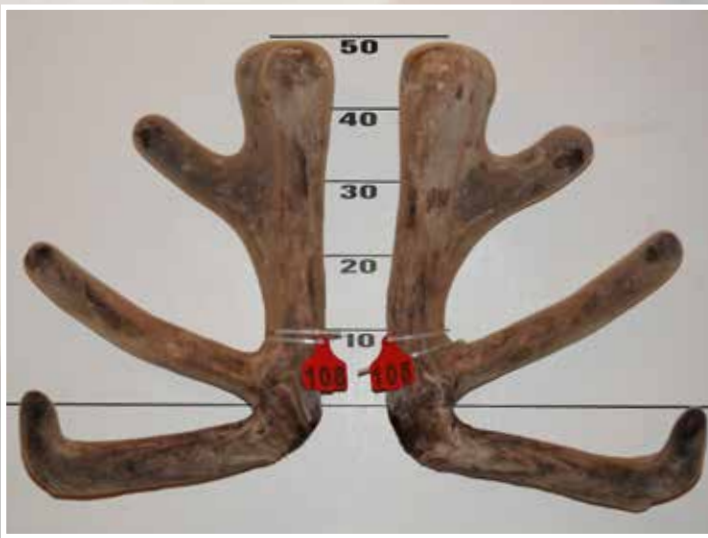
Sponsored by





# OPEN RED VELVET SECTION

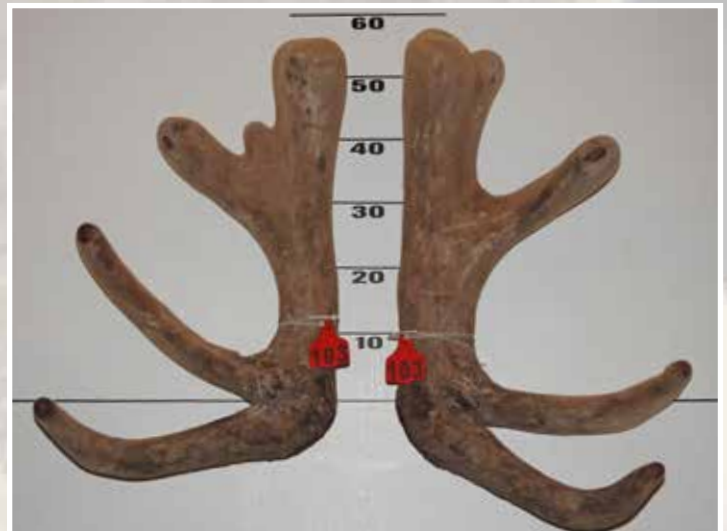
Rural Livestock Limited



FIRST



SECOND



THIRD

Place	No	Points	Wgt (kg)	Stag Name	Age	Sire	Competitor	Address
1st	108	29.28	12.14	Axel 1183	6	Argon	Rupert Red Deer	Geraldine
2nd	110	34.83	16.22	Totara	7	Wardlaw	Hudson/Tayles	Riversdale
3rd	103	37.04	13.72	Joseph	7	ZaCoZee	G Oliver/Brock Deer	Merino Downs
4th	109	52.41	11.76	530	6	224	TJ Cruse	Tuatapere
5th	102	55.26	11.04	Waisake	9	Gainsboro	Brock Deer	Merino Downs
6th	106	55.90	9.76	W/163	8		Rata Peak Station	Geraldine
7th	105	56.19	10.32	Columbo	8	Remington	Swann Family	Ashburton
8th	107	56.93	11.54	McCallum 1135	6	Marx	Rupert Red Deer	Geraldine
9th	101	64.32	10.40	Parker	6		Brock Deer	Merino Downs
10th	104	64.82	9.84	8126		Ideal Neil	Puketotara Deer Farm	Onga Onga

The Southland Branch of the New Zealand Deer Farmers Association thanks our major sponsor, PGG WRIGHTSON

# MADE HERE FOR OUR DEER

WITH FORGED X™ KNOTS FOR EXTRA STRENGTH



- ✔ Strong, smooth X Fence knot.
- ✔ Protected with XTRALIFE Zinc Aluminium coating.
- ✔ Manufactured using the highest quality 2.50mm wire.
- ✔ Made in New Zealand.

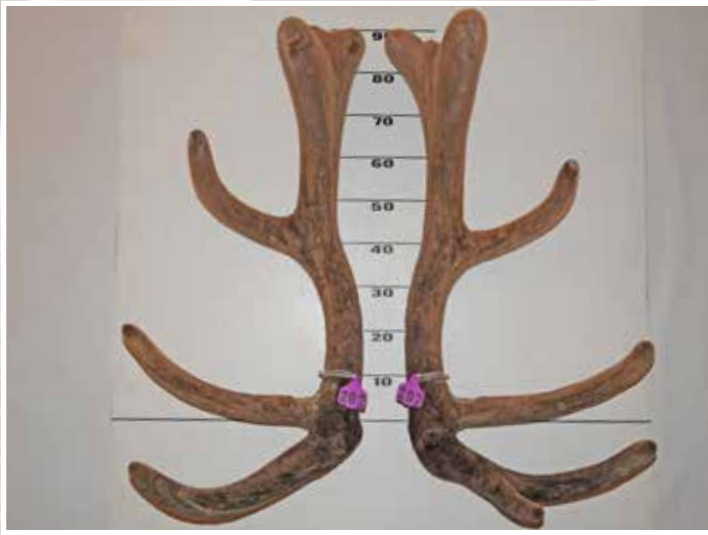
Available from Farmlands stores nationwide.

0800 200 600 | [www.farmlands.co.nz](http://www.farmlands.co.nz)

**Farmlands**  
co-operative

# ELK SUPREME™ SECTION

Alpine Trophy



FIRST



SECOND



THIRD

	<i>No</i>	<i>Points</i>	<i>Wgt (kg)</i>	<i>Stag Name</i>	<i>Age</i>	<i>Sire</i>	<i>Competitor</i>	<i>Address</i>
1st	202	19.00	20.08	Storm 09	8	Trilogy	Clachanburn Elk	Ranfurlly
2nd	201	51.73	17.86	Tucson OR11 248	6	Phoenix	Clachanburn Elk	Ranfurlly
3rd	203	86.07	13.80	Turbo	5	Nepia	Connemara	Te Anau

If you are farming for Venison, Velvet or Trophy. We have all the sales & all the details.

Profiled sale lots, Catalogues online and recent photos of stags for sale throughout the country with updated photos right up to sale day



The Who's who in New Zealand Deer  
ONLINE now

@

[tradedeer.co.nz](http://tradedeer.co.nz)

TAKING DEER ONLINE

[www.tradedeer.co.nz](http://www.tradedeer.co.nz)

To include your deer online  
Contact: Sharon 0274 864 341  
[tradedeer@xtra.co.nz](mailto:tradedeer@xtra.co.nz)  
421 Te Waerenga Rd R D 6 Rotorua 3096



# ARAWATA SIRE STAG SALE

Friday 12th January 2018 at 12.30 pm

EXCITING NEW SIRES



**Sefton** @ 4 yrs 9.44 kg SA (K2 x Buller)  
Arawata bred, cut 11 kg SA @ 5 yrs

2 year sires for velvet & maternal breeding incl sons of Manhattan, Rock Me (Wilkins Farming Ltd), Yogi, Kudos, Victrix and the first sons of HalfShare & other sires along with 13 month hinds & velvetting stags.

Take a look at all Arawata's sires & sale stags on our new website:  
[www.arawatadeerfarm.co.nz](http://www.arawatadeerfarm.co.nz)



**Victrix** @ 7yrs 640 I.O.A (by Zama)



**Southern Man** @ 4 yrs, 9.0 kg SA (by Everest)  
(owned by Arawata/Raincliff Stn & Altrive Deer)



**Yogi** @ 5 yrs



**Halfshare** @ 4 yrs 9 kg SA (By Harlem)  
(owned by Arawata & Altrive Deer)

Enquiries to: John & Mel Somerville Ph 03-246 9803 Mobile 0274 475 437 Email: [johnandmelsomerville@gmail.com](mailto:johnandmelsomerville@gmail.com)

View our sale stags online at [www.tradedeer.co.nz](http://www.tradedeer.co.nz) or [www.newzealanddeer.co.nz](http://www.newzealanddeer.co.nz)

# Connemara Wapiti

VENISON VELVET TEMPERAMENT



## 7th ANNUAL SIRE BULL AUCTION

★ NZ's top Deer Select  
Elk/Wapiti sire (Turbo)!



Sunday 14th January 2018 at 2.00pm

Welcome for inspection from 1.00pm

On the property at MI & BM Hagen

415 Weir Road, Manapouri

On offer: Approx 30 NZ & Fiordland Wap x bulls

Enquiries:

Murray Hagen 021 220 7889

Jim Cameron 021 220 7871

Auctioneers:

Craig North 027 473 0864

(Rural Livestock) Adam Whaanga 027 418 3438

★ See flyer with *Deer Select BVs* inserted with the December Deer Industry News

# THREE YEAR RED SECTION

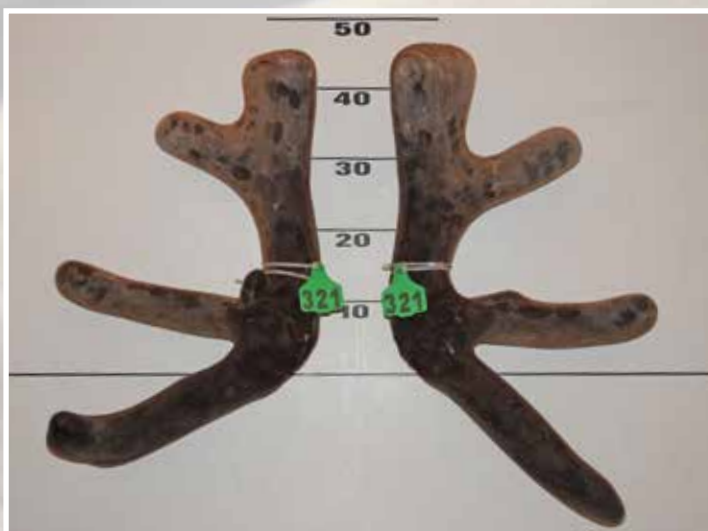
Southland Branch NZDFA Cup



Semen collection to the value of \$1,000  
provided by XCELL Breeding Services



FIRST



SECOND



THIRD

	<i>No</i>	<i>Points</i>	<i>Wgt (kg)</i>	<i>Stag Name</i>	<i>Age</i>	<i>Sire</i>	<i>Competitor</i>	<i>Address</i>
1st	312	26.42	9.56	Altrive 22-14	3	Everest	Geoff Elder	Riversdale
2nd	321	37.48	8.88	491	3	317	TJ Cruse	Tuatapere
3rd	317	37.81	8.56	14177	3	Fats	Rupert Red Deer	Geraldine
4th	314	43.94	9.00	14-4172	3	Grafanarkis	Tower Farms Deer Ltd	Cambridge
5th	309	43.99	7.94	Altrive 34-14	3	Harlem	Geoff Elder	Riversdale
6th	318	44.15	8.24	AW14164	3	Kudos	Nelson Farming	Winton
7th	303	44.85	10.32	14311	3	Eddie	Netherdale Red Deer	Balfour
8th	308	46.32	8.42	Altrive 177-14	3	Everest	Geoff Elder	Riversdale
9th	322	53.35	10.18	Altrive 255-14	3	765-10	Geoff Elder	Riversdale
10th	307	54.41	7.70	371-14	3	Braxton	Brock Deer	Merino Downs
11th	301	55.13	8.78	426-14	3	Axel	Brock Deer	Merino Downs
12th	306	55.15	7.10	14130	3	Riley	Netherdale Red Deer	Balfour
13th	319	55.57	9.14	86	3	530	TJ Cruse	Tuatapere
14th	313	56.13	7.22	The Pentagon 14-4024	3	Grafanarkis	Tower Farms Deer Ltd	Cambridge
15th	315	56.66	8.40	Or15	3	YR66	J & M Scorgie	Outram
16th	320	57.86	8.70	450	3	317	TJ Cruse	Tuatapere
17th	324	60.76	7.56	230-14	3	Red 3	Echo Park Red Deer	Murchison
18th	323	63.14	6.88	14-14	3	44	Echo Park Red Deer	Murchison
19th	316	63.18	11.18	14169	3	Argon	Rupert Red Deer	Geraldine
20th	305	64.07	9.36	513-14	3	Mitre	Brock Deer	Merino Downs
21st	310	64.62	9.14	Altrive 179-14	3	765-10	Geoff Elder	Riversdale
22nd	311	65.44	7.10	323	3	Ulysses	David & Janet Morgan	Pleasant Point
23rd	304	73.83	7.54	14190	3	Fleetwood	Netherdale Red Deer	Balfour
24th	302	77.97	7.26	Y-Pk 320	3	Ulysses	Arawata Deer Farm	Pine Bush

# JOHN FOGARTY

## Velvet Broker and Exporter

Providing professional service and experience  
to new and established deer farmers

*For Personal Service call John anytime on . . .*

**Mobile 0274 345 130**

**A/H Phone: 03 443 6628**

**Email: [deervelvet@wanaka.net.nz](mailto:deervelvet@wanaka.net.nz)**



## 3 YR SELECTED SIRE STAGS

*And 18 Month Hinds For Sale by Private Treaty*



VUKONA

### Romanian, Hungarian, German & English Bloodlines

**Sires represented:**

	Liveweight Kgs	Velvet Weight
<b>KAINO</b> (Maple Valley)	295	10.4kg SA2 @ 6yrs
<b>VUKONA</b> (Remarkable)	355	9.0kg SA2 @ 6yrs
<b>TENDULKA</b> (by Buller)	270	8.62kg SA2 @ 4yrs
<b>TRAVIS</b> (by Hollyoak)	292	9.6kg SA2 @ 8yrs
<b>BOND</b> (Maple Valley)	295	9.1kg SA2 @ 4yrs
<b>BOLT</b> (Altrive)	268	9.6kg SA2 @ 4yrs
<b>BARRETT</b> (by 403)	278	7.8kg SA2 @ 4yrs
<b>BMAC</b> (by Waipori)	310	6.2kg SA2 @ 4yrs
<b>ALONZO</b> (by Sintana)	332	7.8kg SA2 @ 7yrs
<b>NADAL</b> (Platinum)	325	7.3kg SA2 @ 5yrs
<b>NICO</b> (Zama / Everest)	275	7.5kg SA2 @ 4yrs



KAINO



**Maple Valley Deer**  
VELVET • VENISON • TEMPERAMENT

*Enquires & Catalogues*

Peter & Dianne Allan

Email: [stags@xtra.co.nz](mailto:stags@xtra.co.nz), Phone: 03 201 6313



# FOUR YEAR RED SECTION

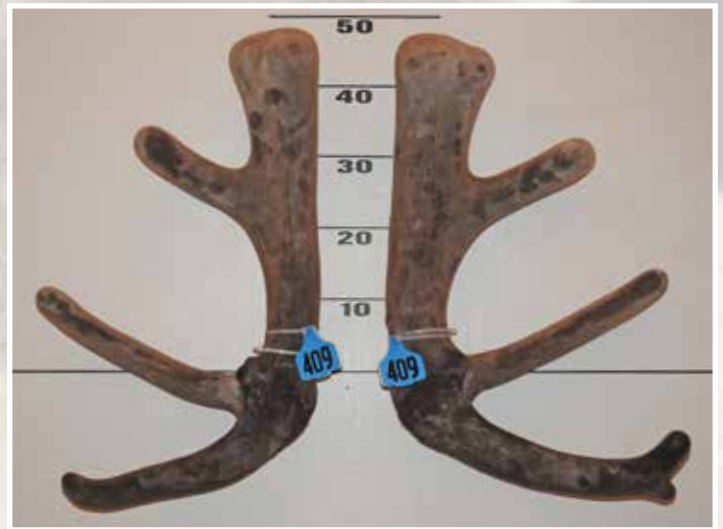
Trish & John Fogarty  
Deer and Livestock Cup



FIRST



SECOND



THIRD

	<i>No</i>	<i>Points</i>	<i>Wgt (kg)</i>	<i>Stag Name</i>	<i>Age</i>	<i>Sire</i>	<i>Competitor</i>	<i>Address</i>
1st	408	19.08	10.70	Ronaldo 340	4	Rascal	Rupert Red Deer	Geraldine
2nd	407	25.24	10.04	13749	4	102252	Peel Forest Estate	Geraldine
3rd	409	26.29	9.94	Max	4	Wardlaw	Brock Deer	Merino Downs
4th	411	27.92	9.80	149-13	4	Johnie Walker	Echo Park Red Deer	Murchison
5th	410	31.67	10.14	67-13	4	Johnie Walker	Echo Park Red Deer	Murchison
6th	403	42.81	8.44	Fatts	4	382 White	Swann Family	Ashburton
7th	404	42.85	9.32	Jura	4		D & J MacGibbon	Te Anau
8th	405	43.79	10.32	5571	4	Fats	Wellington Farms Ltd	Te Awamutu
9th	402	53.36	9.30	Netherdale 175/13	4	Wardlaw	DS & NE McCall	Benio
10th	406	62.27	8.10	Green 4	4	Harlem	Blue Willow Farm	Winton
11th	401	66.92	7.32	Jeef	4	Netherdale 36/09	DS & NE McCall	Benio

# THREE YEAR ELK/WAPITI SECTION

Southland Branch NZDFA Cup

Sponsored  
by Allflex NZ  
Limited



FIRST



SECOND



THIRD

	<i>No</i>	<i>Points</i>	<i>Wgt (kg)</i>	<i>Stag Name</i>	<i>Age</i>	<i>Sire</i>	<i>Competitor</i>	<i>Address</i>
1st	604	21.90	12.12	Forecaster	3	Storm	Tikana	Browns
2nd	601	34.81	9.64	Green 808	3	G866	David & Janet Morgan	Pleasant Point
3rd	602	36.17	9.34	YB602	3	Zinzan	Whyte Farming Co	Ashburton
4th	603	36.76	10.16	Danali YB 996	3	Yukon	Whyte Farming Co	Ashburton



Clachanburn Boss



*If you are serious about finishing or selling weaners there is only ONE breed of deer to use!*



Clachanburn Megatron

## ***Breeding New Zealand's highest growth rate deer***



Clachanburn Galvatron

***Elk & Wapiti Bull Sale  
Wednesday 17 January 2018***

***J & M Falconer  
03 444 7511, 0274 344 593,  
[clachanburnelk@scorch.co.nz](mailto:clachanburnelk@scorch.co.nz)***



Clachanburn Skyfall



- eBVs for Growth
- ceBVs for Venison  
(Carcass Yield and Venison Tenderness)
- eBVs for Velvet
- eBVs for Health (Parasite Tolerance)
- Terminal Index \$\$

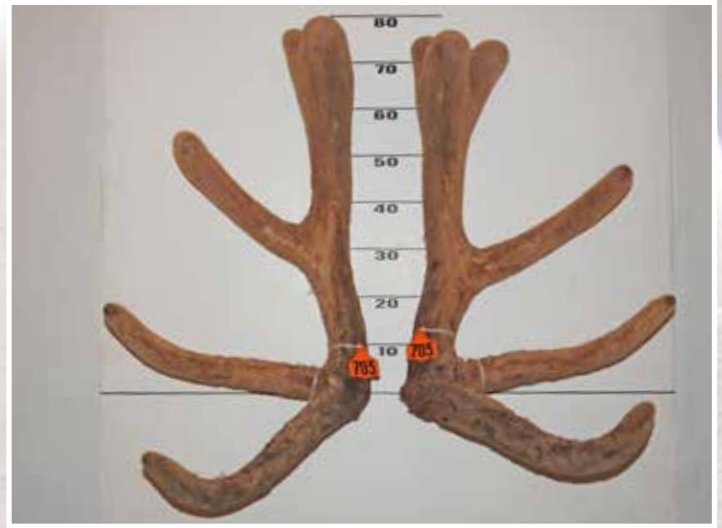
**Annual on farm auction of Elk/Wapiti sires, Yearling and Mixed Age Cows**

# ***Your Genetic Key to Profit***

**[www.tikanawapiti.co.nz](http://www.tikanawapiti.co.nz)**

# FOUR YEAR ELK/WAPITI SECTION

Elk & Wapiti Society Trophy



**FIRST**



**SECOND**



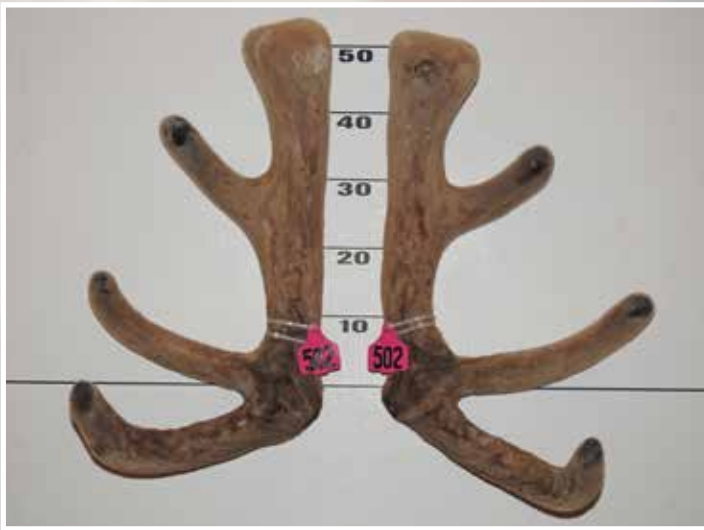
**THIRD**

	<i>No</i>	<i>Points</i>	<i>Wgt (kg)</i>	<i>Stag Name</i>	<i>Age</i>	<i>Sire</i>	<i>Competitor</i>	<i>Address</i>
1st	703	28.93	16.08	W61	4	Red 83	Littlebourne Farm	Winton
2nd	705	31.50	17.36	Thor	4	Nepia	Tikana	Browns
3rd	708	36.94	17.32	Matai	4	Deano	Whyte Farming Co	Ashburton
4th	704	56.01	10.28	W63	4	Red 83	Littlebourne Farm	Winton
5th	709	56.17	13.16	Harrod	4	Nepia	Tikana	Browns
6th	710	56.69	12.54	Kensal	4	Nepia	Tikana	Browns
7th	701	77.91	10.48	No.1 Pk13 001	4	Boss	Clachanburn Elk	Ranfurlly

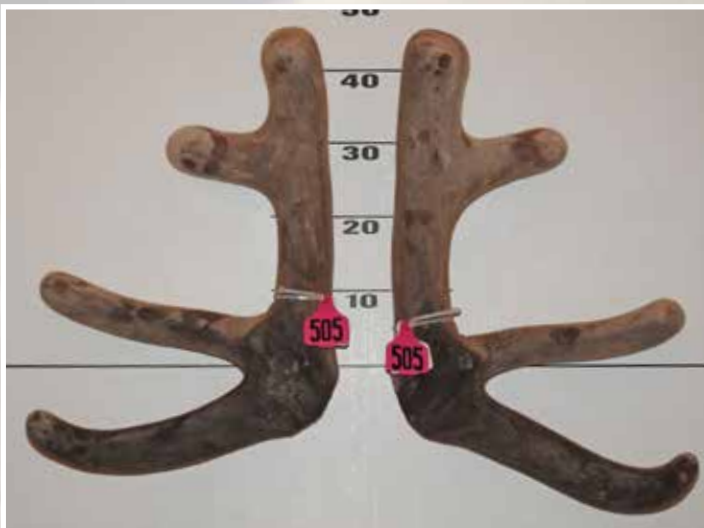
The Southland Branch of The New Zealand Deer Farmers Association thanks Mountain River Venison and the ILT for their continued support of the Awards Dinner.

# FIVE YEAR RED SECTION

Downlands Deer Transport



FIRST

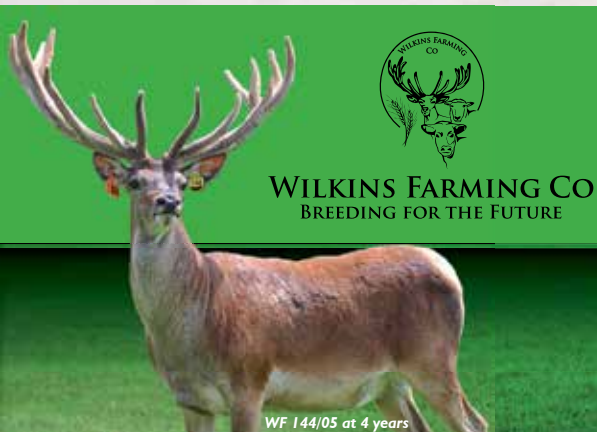


SECOND



THIRD

	No	Points	Wgt (kg)	Stag Name	Age	Sire	Competitor	Address
1st	502	34.99	10.28	JD	5	Abel	K & S Norman	Pahiatua
2nd	505	48.53	8.66	B9	5	71	B.A.D Deer Partnership	Riverton
3rd	506	51.38	13.40	Altrive 188-12	5	Everest	Geoff Elder	Riversdale
4th	503	52.54	10.24	Red 10	5	YR 66	J & M Scorgie	Outram
5th	504	56.16	8.30	Anvil	5	Marcx	Forest Road Farm	Waipawa
6th	501	59.78	10.94	Sefton Y-R 187	5	K2	Arawata Deer Farm	Pine Bush



**WILKINS FARMING CO**  
BREEDING FOR THE FUTURE

WF 144/05 at 4 years

## RED STAG SALE

EASTERN & EUROPEAN

15 January 2018 • 2.00pm

65 Harvey Road, Athol

- SALE STAGS W12EBV + 22.00
- 2YO LIVEWEIGHTS IN EXCESS OF 230KG

Catalogue available online [www.wilkinsfarming.co.nz](http://www.wilkinsfarming.co.nz)

FOR ENQUIRIES  
CONTACT

Michael Wilkins 027 249 9317 Pauline Pattullo 027 249 9309 Lockie Lott 027 372 3675... or your Local Deer Specialist

# FALLOW TROPHY ANTLER

New Zealand Fallow Deer  
Society Cup

**FMG**  
Advice & Insurance



**FIRST**



**SECOND**



**THIRD**

	<i>No</i>	<i>Points</i>	<i>Wgt (kg)</i>	<i>Stag Name</i>	<i>Age</i>	<i>Sire</i>	<i>Competitor</i>	<i>Address</i>
1st	7	253 1/8	3.34	Reg	4		Whyte Farming Co	Ashburton
2nd	8	248 5/8	3.84	Glenn	4		Whyte Farming Co	Ashburton
3rd	2	241	1.96	3			Matt Dalrymple	Timaru
4th	3	235 2/8	2.06	2			Matt Dalrymple	Timaru
5th	4	228 2/8	2.22	1			Matt Dalrymple	Timaru
6th	5	222 4/8	1.88	Blue 12	3	Green 88	Pinewood Deer Farm	Helensville
7th	6	217 6/8	1.74	Blue 211	3	Green 68	Pinewood Deer Farm	Helensville
8th	1	214 3/8	2.20	Blue 28	8		Top Deck	Merino Downs

**Fallow Trophy Antler DOES NOT include span and burr measurements NZDFA Competition Score.  
(Score units are inches of antler)**

The Southland Branch of the New Zealand Deer Farmers Association  
thanks all sponsors of the 2017 NZ National Velvet & Trophy Antler Competition

# ELK/WAPITI TROPHY ANTLER SECTION

Elk & Wapiti Society of New Zealand Trophy



FIRST



SECOND

## Wapiti (Non Typical)

	No	Points	Wgt (kg)	Stag Name	Age	Sire	Competitor	Address
1st	802	564 7/8	22.88	Seattle	7	801	Whyte Farming Co	Ashburton
2nd	801	508 1/8	19.48	Y129	7	801	Whyte Farming Co	Ashburton

Includes an adjustment for span. NZDFA Competition Score. (Score units are inches of antler)



FIRST

## Wapiti (Typical)

	No	Points	Wgt (kg)	Stag Name	Age	Sire	Competitor	Address
1st	803	469 4/8	18.16	Yukon	7	801	Whyte Farming Co	Ashburton

Includes an adjustment for span. NZDFA Competition Score. (Score units are inches of antler)

# Altrive Red Deer

performance recorded since 1985



Geoff Elder

Altrive, 25 Waipounamu Road, RD6,  
Gore, Southland

Phone 03 202 5809 Mobile 0274 365214

This year we have cut **30 three year olds**  
**@ 7Kg or better** with a **top sale weight of 10Kg.**

## on-farm **DEER SALE** 12th January 2018 5.00pm

Approx 25 3 year old **Sire Stags** plus approx  
60 2yr **Velveting Stags** and 50 **Yearling Hinds**



ND 225-11 7.82kg SA 3yr  
9Kg SA 4yr, 12Kg SA 5yr



Altrive 22-14  
9.5Kg SA 3yr X Everest



Zama 11.3kg 6yr  
2012 Champion and people's  
choice



34-14  
7.85kg SA 3yr X Harlem



Zama son  
89-13 10.6Kg SA 3yr



188-12 - x Everest  
13.2kg SA 5yr



The Prophet  
10.5Kg SA 9yr  
Supreme Champion 2013



Altrive 81-06  
8.45kg SA 4yr (photo)  
11.8kg 7yr, and a  
massive 18.4Kg SS 10yr

### Offering progeny of:

- **81-06** 11.8kg 7yr,  
18.4Kg SS 10yr
- **Everest**  
12.25kg 9yr
- **765-10**  
8.1Kg SA @ 3yr
- **Zama** 12.25kg 7yr
- **ND225-11**  
12Kg @ 5yr
- **The Prophet**  
10.54Kg SA @ 9yr
- **Harlem**  
8.88Kg SA 5yr  
Champ 2012

Check out our website [altrivereddeer.co.nz](http://altrivereddeer.co.nz) for more information

## 17<sup>th</sup> Elite Sire Stag & Yearling Hind Sale



Joseph 13.9kg @ 7yrs  
2016 Reserve Champion



**Brock Deer**



Waisake 11.6kg @ 8yrs  
4th Open Red 2016

**Thursday 11th January 2018, 6pm**



Summit @ 6yrs

Other Sires Represented:

**Mitre**  
**Parker**  
**Axel**  
**Braxton**

**100+ 2yr Velvet Stags**



Max 9.9kg SA2 @ 4yrs

Eddie Brock 027 6076822 Elliot 027 2776733

[eddie@brockdeer.co.nz](mailto:eddie@brockdeer.co.nz)

Facebook: Brock Deer



# RED TROPHY ANTLER SECTION

Xcell Cup



FIRST



SECOND



THIRD

	<i>No</i>	<i>Points</i>	<i>Wgt (kg)</i>	<i>Stag Name</i>	<i>Age</i>	<i>Sire</i>	<i>Competitor</i>	<i>Address</i>
1st	901	628	11.64	Duke	6	Johnny Oaks	Colin Kelly	Rotorua
2nd	903	610 3/8	11.7	Apex	4	Nixon	Canes Deer	Reporoa
3rd	902	473 6/8	11.44	Rata Max	9	Astromax	Rata Hill Deer Farm	Hokonui

Red Trophy Antler DOES NOT include span and burr measurements  
NZDFA Competition Score. (Score units are inches of antler)



# NETHERDALE ELITE RED DEER

## 31<sup>ST</sup> ANNUAL SIRE STAG SALE

11<sup>TH</sup> JANUARY 2018  
1.30PM

30 3yr old Sires - Top weight 10.40kg SA2

70 2yr old Velvet stags

40 13month old Recorded hinds



MASTER SIRE  
HENSHAW - 11.10KG SA2 5YRS



MASTER SIRE  
BRONX - 4YRS



MASTER SIRE  
HARLEM - 5YRS



LOT 1 - 2018 SALE  
10.40KG SA2

David Stevens 03 201 6330 | 0274 331 383 | [netherdale@xtra.co.nz](mailto:netherdale@xtra.co.nz) | [www.netherdale.co.nz](http://www.netherdale.co.nz)  
Ben Beadle 0277 281 052 or your local PGG Wrightsons agent  
Catalogue available online at [www.netherdale.co.nz](http://www.netherdale.co.nz) or



# INAUGURAL STAG SALE

4PM 9 JANUARY 2018 | 147 NORTH BOUNDARY RD GERALDINE

Approx 16 3Y.O Sire Stags | Approx 60 2Y.O Velvetting Stags



AXEL 12.0kg SA2 @ 6yrs



ZEUS 8.6kg SA2 @ 3yrs



RONALDO 10.6kg SA2 @ 4yrs

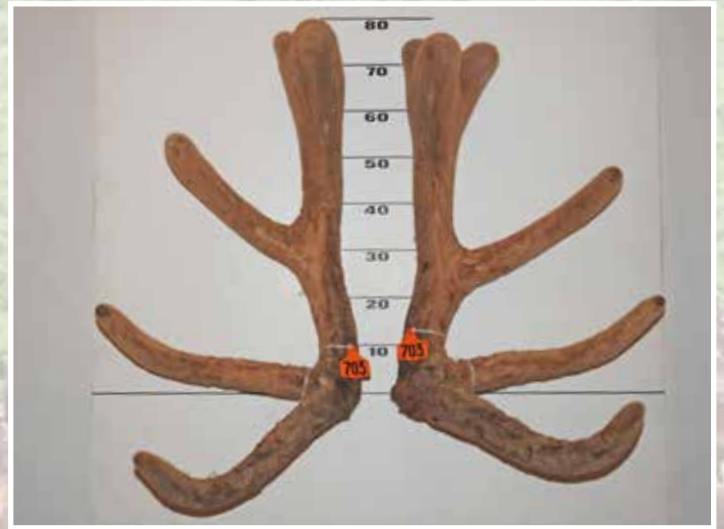
Enquiries: Martin Rupert 03 696 3563 | Josh Brook 03 696 3903  
[rupertreddeer@outlook.co.nz](mailto:rupertreddeer@outlook.co.nz) | [www.rupertreddeer.co.nz](http://www.rupertreddeer.co.nz)

# OPEN SECTION

**PGG Wrightson**  
Allcomers Trophy



**CHAMPION**



**RESERVE CHAMPION**

	<i>No</i>	<i>Wgt (kg)</i>	<i>Stag Name</i>	<i>Age</i>	<i>Sire</i>	<i>Competitor</i>	<i>Address</i>
Champion	108	12.14	Axel 1183	6	Argon	Rupert Red Deer	Geraldine
Reserve	703	16.08	W61	4	Red 83	Littlebourne Farm	Winton



**CHAMPION**

**TROPHY  
ANTLER  
CHAMPION**  
Landcorp Trophy

<i>No</i>	<i>Points</i>	<i>Wgt (kg)</i>	<i>Stag Name</i>	<i>Age</i>	<i>Sire</i>	<i>Competitor</i>	<i>Address</i>
802	564 7/8	22.88	Seattle	7	801	Whyte Farming Co	Ashburton

The Southland Branch of the New Zealand Deer Farmers Association thanks all competitors for their participation.

# 2018 SIRE SALE

McDONALD ROAD OUTRAM,  
13TH JANUARY AT 1:30PM

STARKEY

COSMOS

OFFERING A SELECTION OF 2 AND 3 YEAR OLD SIRES SELECTED FOR...



**VENISON** - Black Forest high growth rate stags are intensively selected using multiple profit-based traits, and not by BVs alone. The ideal stag for the progressive farmer.



ABACUS

**VELVET** - Black Forest velvet sires produce attractive, clean, heavy, traditional style velvet heads with many NZ champions in the pedigree.



**TROPHY** - Black Forest sires produce long, wide, attractive, high-scoring heads with wow factor. Proven in our commercial herd, at maturity these deer are consistently producing the industry's finest line of trophies.

Contact Richard anytime to discuss Black Forest Park Deer and your requirements for top performing genetics. Mobile **027 276 0664** or email [richard@blackforest.co.nz](mailto:richard@blackforest.co.nz)



 [blackforest.nz](http://blackforest.nz)  [/blackforest.nz](https://www.facebook.com/blackforest.nz)



# AI

**Lynne Rhodes AI specialises in the artificial insemination of Red Deer and Elk throughout New Zealand, Australia and North America.**

- Trans-cervical AI technique in deer pioneered and developed by Lynne
- Experienced, proven deer AI technicians
- Detailed programmes provided with each booking
- Semen requirements arranged from any source upon request.

Use the proven professionalism, skill, and experience of Lynne Rhodes AI Ltd to improve your herd genetics.



Contact Lynne  
Mobile 0274 952 461  
E-mail [lynne@deerai.co.nz](mailto:lynne@deerai.co.nz)  
[deerai.co.nz](http://deerai.co.nz)

  
**AI** **LYNNE RHODES**  
SERVICES LIMITED  
DEER INSEMINATION SPECIALISTS